



Everlux® news



Award nominated housing scheme choose ☞ Everlux® signs

Award nominated housing scheme choose ☞ Everlux® signs

☞ Everlux® recently worked closely with Argos Fire Protection on an award nominated Extra-Care Housing scheme for the elderly in Liskeard, Cornwall. The scheme which opened in 2010 is located on the site of the



The efficacy of signs



☞ editorial

☞ Everlux® news was created in 2007. This followed the first newsletter presented in the Portuguese market in 2004. Since then, other newsletters have been developed in Spanish, Hungarian and French - covering almost all the markets we are in.

☞ Everlux® newsletter allows us to communicate with all our customers, including architects, engineers, health and safety officers and every kind of player in the fire and safety market. We now have more than 21.152 readers!

It's a pleasure, an honour and also a responsibility that we enjoy, and we are grateful to those who read our newsletters.

2011 will be a very important year. There are a lot of innovative ideas that ☞ Everlux® will introduce to the UK market: >

The efficacy of signs

Since it started its operations **Everlux**® has used several manufacturing processes and made products with different qualities. This is due to the evolution of the market itself and to the research and development of new materials and new technologies.

In 1991 **Everlux**® performance met the photoluminescent requirements of standards DIN 67510. The performance values of **Everlux**® at that time were 20 mcd/sq.m. 10 minutes after the stimulation of the signs had ceased. After 60 minutes the value was 2.8 mcd/sq.m. and the autonomy (time during which the signs remain visible) was 350 minutes.

Year	Luminous efficacy		
	after 10 minutes (in mcd/sq.m.)	after 60 minutes (in mcd/sq.m.)	Autonomy (in minutes)
1991	20	2.8	350
1997	25	3.1	516
2001	142.5	21.5	2250
2003*	170	22.5	2250
2007	215	30	3100

(* In 2003 there was an evolution regarding the values of luminous intensity after 10 and 60 minutes)

Also studies following the most recent accidents where evacuations had taken place in emergency situations, revealed the absolute efficacy of the Photoluminescent Sign System.

Research was then started at various levels (raw materials, manufacturing >

> Award nominated housing scheme choose **Everlux**® signs

old Passmore-Edwards Hospital which closed in 2004. The hospital was originally opened in 1896 as a charitable donation to the people of Liskeard by John Passmore-Edwards, a renowned philanthropist who funded numerous hospitals, libraries and schools in Cornwall. The site has sympathetically retained the original building within the state of the art centre which provides 55 apartments along with extensive facilities including community lounges, dining area, kitchen, hairdressing salon, hobby rooms, activity zones, therapy rooms and gardens. From a technical signage viewpoint, the layout of the 3 storey building provides a combination of larger open plan communal areas, long interlinking corridors and multiple lifts and staircases.

The scheme which was designed by Mitchell Architects for Sarsen Housing Association presented an opportunity for Argos Fire Protection Ltd to advise on all aspects of fire safety for the site, including safety signage. As a long standing distributor and partner of

Everlux® products and safety solutions, Argos Fire Protection and **Everlux**® worked in tandem to ensure that the unique layout of the

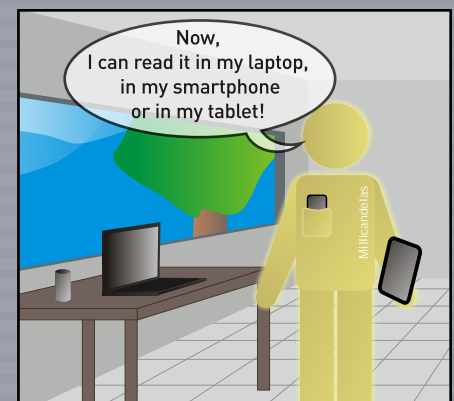
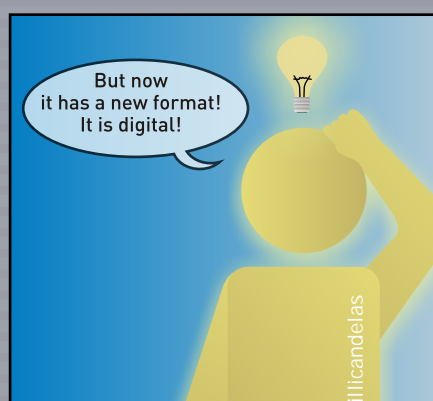
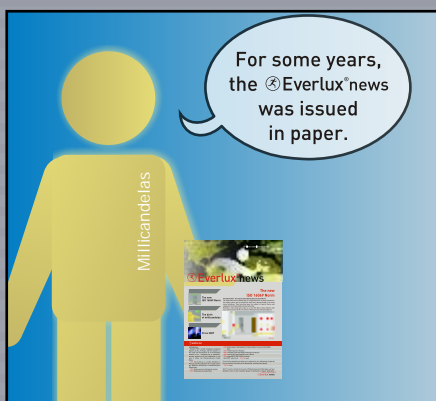
building was appropriately, and aesthetically, signed. This partnership included joint site surveys and consultations with Paul Baber, Argos' Technical Sales Engineer, **Everlux**® Sales Managers and Sarsen Housing Association.

Additional consultation was also provided with the preparation and production of individual evacuation plans by **Everlux**® staff.

Des McCartan-Mooney, Managing Director of Argos Fire Protection Ltd, based in Exeter, said "the scheme offered the opportunity for photoluminescent signs to be used as an effective and economical alternative to more expensive lit signage schemes. >



millicandelas



> processes, etc) enabling us to have a high performance signage system at the same cost.

Standards and legislation have also evolved to recognise the efficacy of the photoluminescent safety signs, demanding higher quality. In the USA the new building code of New York was the first to implement this. At international standards level ISO 16069 was approved, and in Spain the required minimum values are now 210 mcd/sq.m. after 10 minutes, 29 mcd/sq.m. after 60 minutes and 3000 minutes autonomy. Several other countries, such as France and Hungary are at this stage, or are

developing their own standards and legislation.

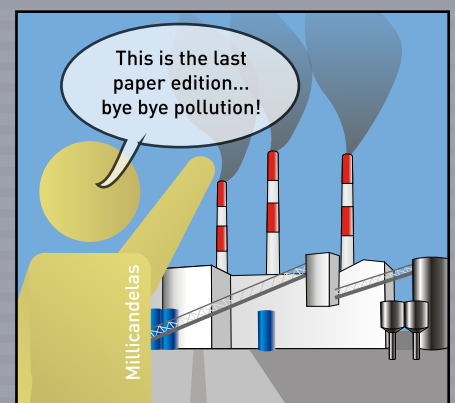
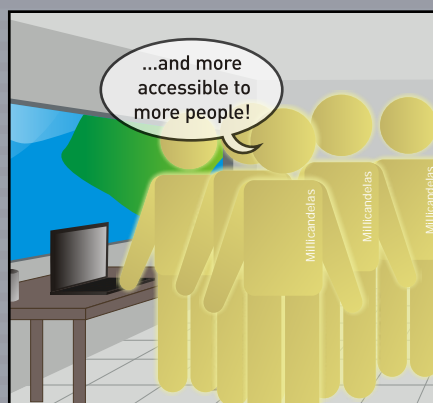
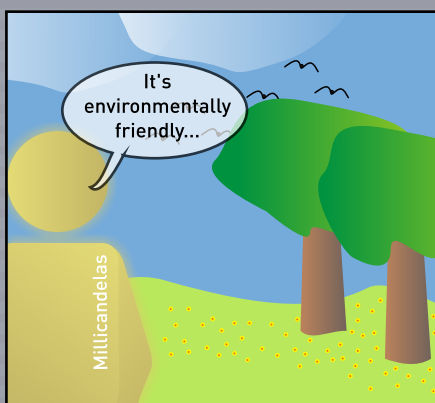
As a brand present in several countries, **ⓈEverlux®** has the obligation and the ambition to be in the forefront of photoluminescent signs and to meet the most demanding specifications.

Thus in 2007 **ⓈEverlux®** presented its most recent evolution of photoluminescent efficacy. This evolution raised the values of luminous efficacy to 215 mcd/sq.m. after 10 minutes, 30 mcd/sq.m. after 60 minutes and the autonomy to 3100 minutes, thereby meeting the requirements of the new legislation already in force in several countries.

Thus we always bear in mind one of our key values: the continuous research and development in order to obtain the best products for the best solutions in safety signs.



The numerous corridors within the building meant that Type "P" panoramic signs were the ideal solution". He added "the complex was completed using European Directive signs and the end user was very happy with the style and quality of the signage used". The award nominated scheme represented another classic example of **ⓈEverlux®** working in close partnership with his distributors to provide a safety signage solution which combines aesthetical and legislative demands to create superior results for the consumers.



> Editorial

④Everlux®news will start to be produced and sent to you in a digital format. This will be the last paper edition. This allows us to be environmentally-friendly, cost effective and more accessible to even more people. The frequency of contact will also increase, we will issue an edition 6 times a year rather than 4 times a year, allowing us to keep in touch and to provide the most up-to-date news.

④Everlux® will continue to cover topics of note and will include reports about projects that are good examples of the best practices on safety signage. We shall provide detailed explanations and reports of the best solutions to safety sign issues, providing real examples of completed projects and shall provide a wealth of information that will aim to promote the competence and sales opportunities in the marketplace.

④Everlux®news will also be the appropriate means of communication for special promotions that will be offered to our customers throughout the year.

Therefore, it is essential that all our readers register their e-mail address in order to continue receiving the next ④Everlux®news. Please e-mail us at everluxnews@everlux.eu with your contact details (refer to form below).

④Everlux® also intend to further improve customer relations in the following ways:

④Everlux® wishes to be closer to all our customers in order to provide better support in the technical and commercial areas. Following our debut appearance at the Firex Roadshow in Manchester last November ④Everlux® will concentrate all efforts on local exhibitions, where we can give more effective support to our customers, to all specifiers and to the market. ④Everlux®'s presence at Intersec, in Dubai, and at Interschutz, in Germany, proved to be a more efficient way to support our international markets. The experience achieved at Firex North in Manchester was a nationwide success that we intend to replicate throughout the UK over the next few years.

In addition to this, several technical presentations and workshops will be developed throughout the country, covering important issues related to Safety Signs. These events can cater for individual companies or could be included in conferences organised by other related professional organizations or associations.

④Everlux® also provides in-house training. New contents regarding standards, best practices, signs survey, and sales opportunities will be developed and presented to our customer's teams, in their own premises, offering the most comfortable, cost-effective and efficient training available.

On the Human Resources front, the permanent local presence of our two dedicated Sales Managers will ensure total support for the UK market. This will allow us to provide advice, training, and help with our site surveys etc. as is required.

Also from the R&D department, ④Everlux® will continue to develop new products and innovative solutions to fully satisfy the market's needs. Following the successes of the luxury range, *excellence* by ④, a new IMO catalogue will be available in June 2011. ④Everlux® will also present an exciting and innovative software package based on AutoCAD. This will prove to be the perfect tool for architects, engineers and all those who work on safety projects, risk assessment and installation.

The ④Everlux® team will continue to work hard to achieve a dedicated service for our customers as we continue to lead the Photoluminescent Safety Signs Market. ○

The next ④Everlux®news will be exclusively sent by e-mail. Make sure you receive it!

If you wish to continue receiving the ④Everlux®news, please send the information below to everluxnews@everlux.eu

Company: _____

1) Name: _____ E-mail: _____ Position: _____

2) Name: _____ E-mail: _____ Position: _____

3) Name: _____ E-mail: _____ Position: _____

4) Name: _____ E-mail: _____ Position: _____ ○